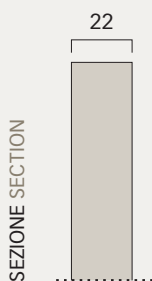


LAB - LAB 30



LAB: anta in particelle di legno sp.22 mm a bassa emissione di formaldeide (classe E1) rivestito in melaminico ad alta pressione (Hpl) sp.0,3 mm. Bordo in ABS da 1 mm sui 4 lati, il tutto incollato con colla poliuretanic.

LAB: door composed by wood particles 22 mm thick low formaldehyde emission (class E1) covered in HPL melamine 0.3 mm. The door is entirely. ABS Edged ,1 mm thick, with polyurethane glue.



VISTA FRONTALE FRONT VIEW

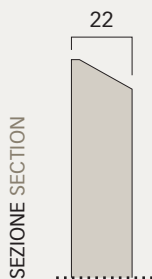


VISTA 3D 3D VIEW

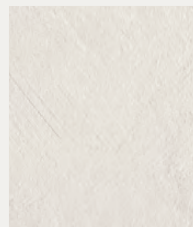


LAB 30: anta in particelle di legno sp.22 mm con taglio 30° a bassa emissione di formaldeide (classe E1) rivestito in melaminico ad alta pressione (Hpl) sp.0,3 mm. Bordo in ABS da 1 mm sui 4 lati, il tutto incollato con colla poliuretanic, con questa tipologia di anta è necessario prevedere sempre la gola (SLIM o PIATTA).

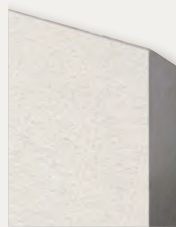
LAB 30: door composed by wood particles 22 mm thick with 30° cut low formaldehyde emission (class E1) covered in HPL melamine 0.3 mm. The door is entirely. ABS Edged ,1 mm thick, with polyurethane glue. With this door is mandatory to place the groove (SLIM or FLAT) polymeric leaf matt, glossy of wood looking. White in the internal side.



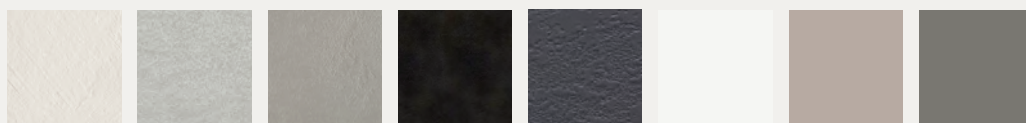
VISTA FRONTALE FRONT VIEW



VISTA 3D 3D VIEW



**FINITURE LAB
LAB FINISHES**



Cemento
FB50

Cemento
FB02

Cemento
FB51

Cemento
FB49

Cemento
DP2166

Bianco
U6385

Cashmere
U6581

Grigio scuro
U6299



Legno
S126

Legno
S123

Legno
S122

Legno
S121

**FINITURE LAB 30
LAB 30 FINISHES**



Cemento
FB50

Cemento
FB02

Cemento
FB51